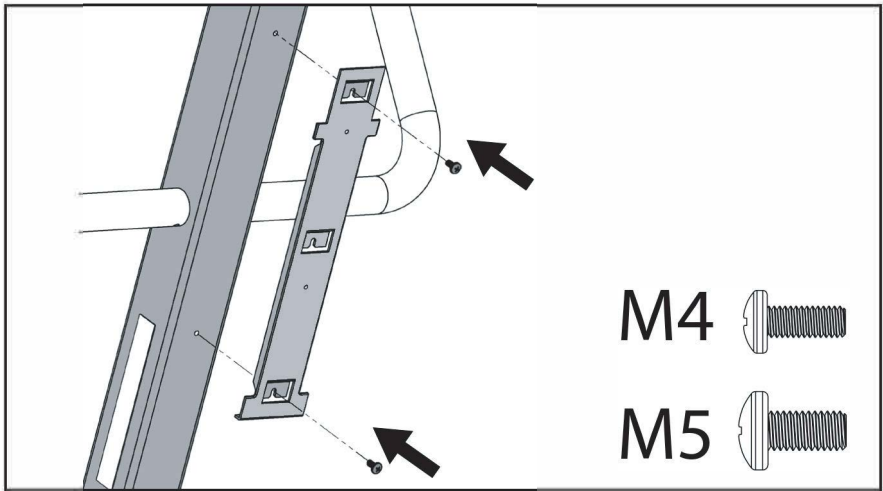
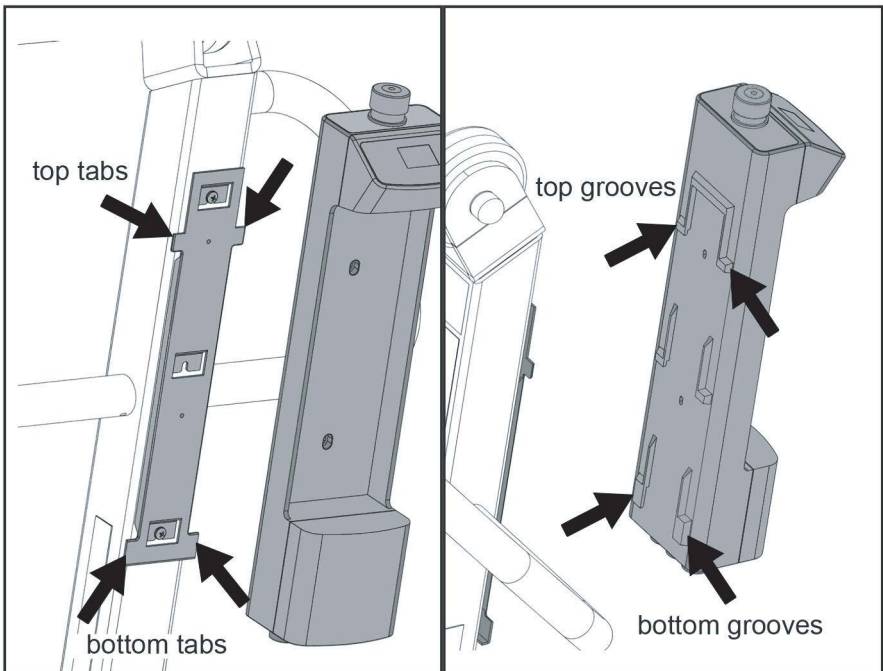


Quick Setup Guide to TiMotion Electronics

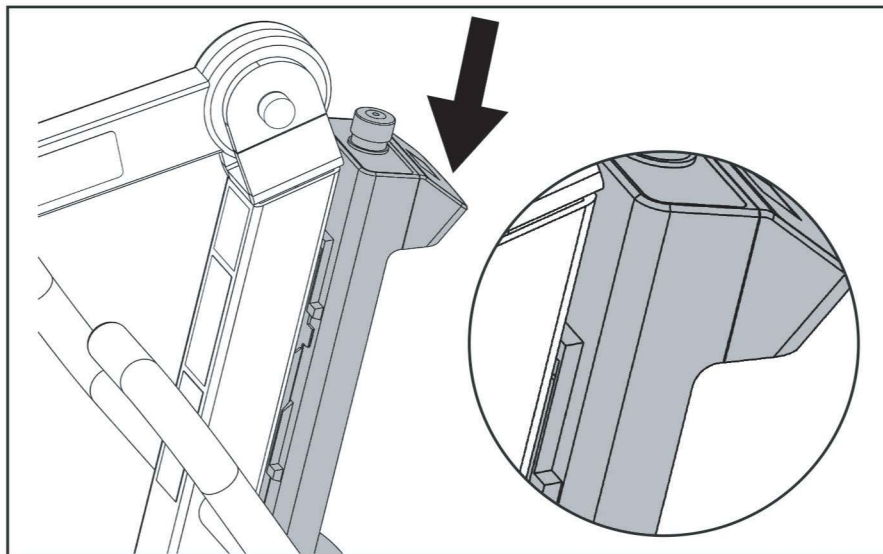
Step 1: Have the flat side of the bracket facing away from the lift, and position the bracket as follows. Secure the metal bracket to the holes on the mast using two M5 screws as follows.



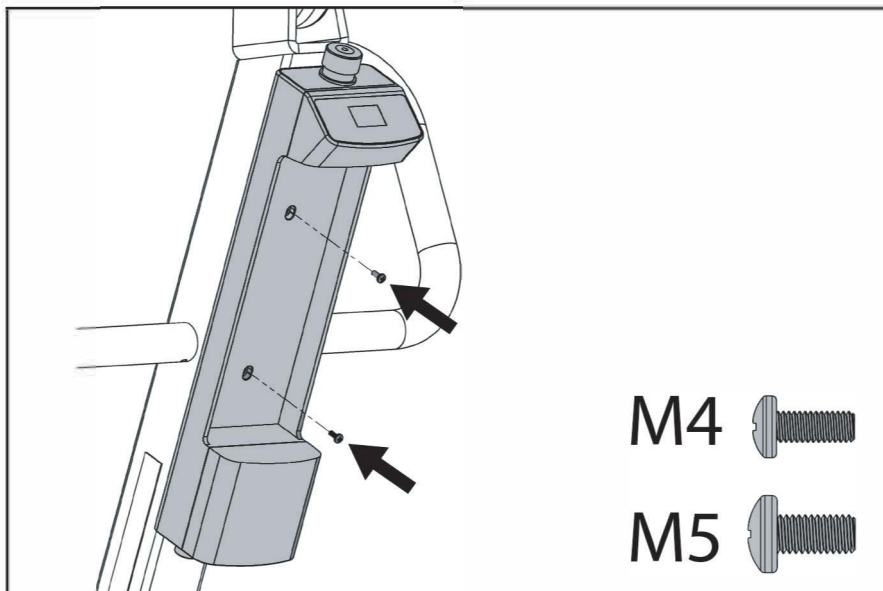
Step 2: Align the top and bottom grooves on the back of the control box with the top and bottom tabs of the metal bracket as follows.



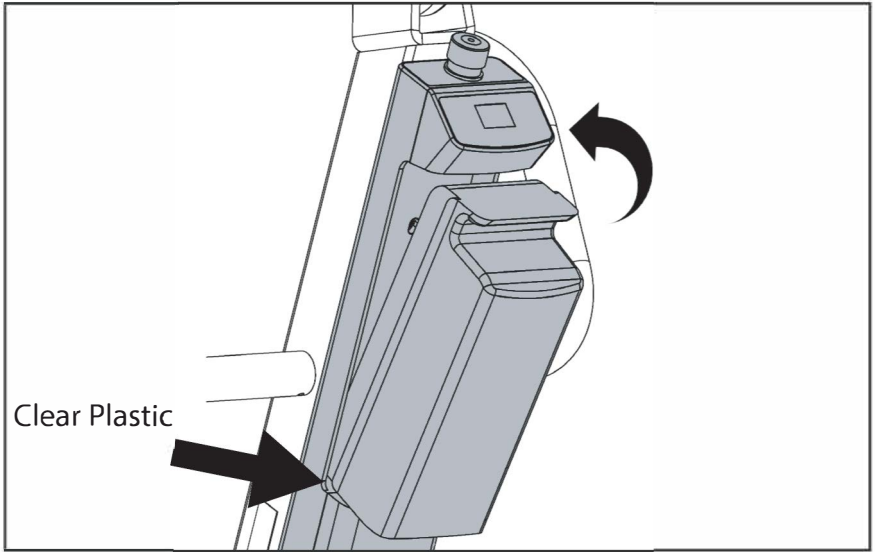
Step 3: Insert the tabs into the grooves on the control box by pressing the control box against the bracket and sliding downward. Make sure the top and bottom tabs are secured inside the grooves.



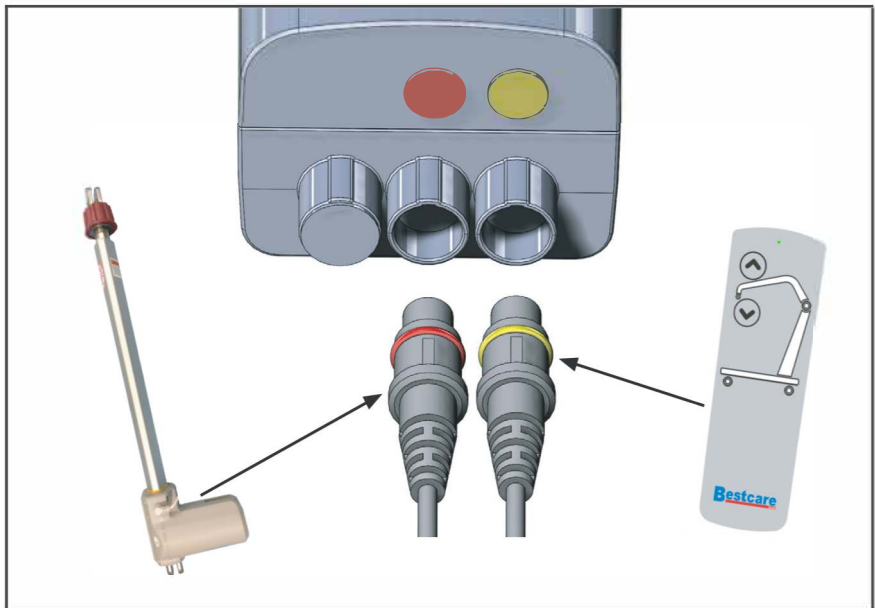
Step 4: Secure the control box to the metal bracket with two M4 screws as follows. Remove the battery pack to see the two holes on the control box if needed.



Step 5: Insert the tab at the bottom of the battery pack into the slot on the control box, and then push the battery pack into the control box. Should hear the battery pack snap into place. Make sure to remove the clear plastic at the battery contact.



Step 6: Plug the actuator jack to the middle port under the control box, and plug the hand control jack to the right-most port under the control box. Make sure to align the notch on the jack to the groove on the port.



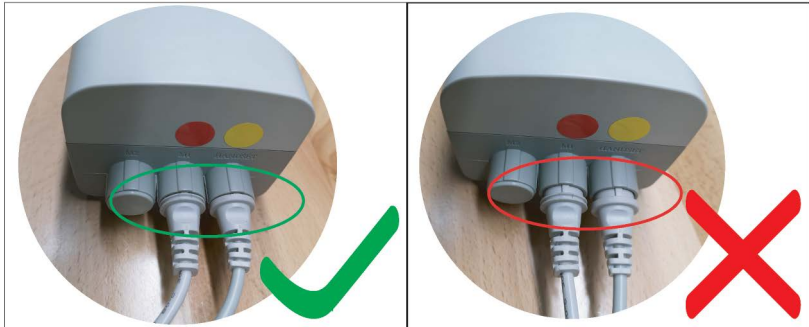
Fully charge the battery before first use.

To charge the battery, the red button needs to be in the up position, and plug the charger jack into the charging port that is on the side of the control box. The battery should be charged daily to prolong the battery life.



Fully plugged in

Not plugged in properly



Different Display Indications



A thunderbolt next to a battery icon indicates the battery is currently charging.



This display indicates the load is over the lift capacity.



This display indicates the battery is depleted.



When charging the battery, the indicator light will turn amber. When the battery fully charged, the indicator light will turn green.

Indicator Light