

## BATTERY CELL REPLACEMENT GUIDE

### Disclaimer:

*This guide is intended only for customers with general understanding of a battery and other basic electrical components. Incorrectly installed battery will damage the control box, and failure to follow the instructions may cause fire. Please read carefully through the whole instructions beforehand to understand the process thoroughly. Bestcare LLC is not responsible for bodily injury, damages to lift equipment, or damages to personal property arising from failure to follow instructions. Perform the replacement at your own risk.*

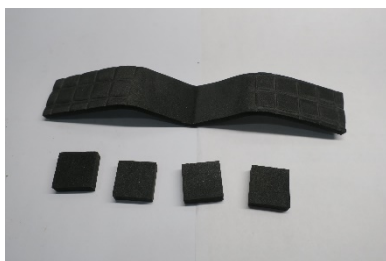
### **Tool(s) and Part(s) Needed**

1. Screwdriver
2. 2 x New Battery (12V 5.0Ah / Approx. Dims.: 3.5" x 2.75" x 4")

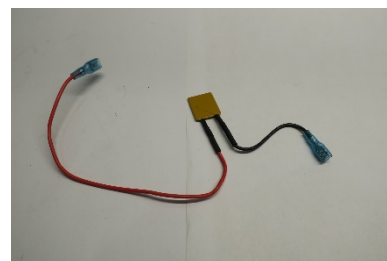


### **Battery Pack Components**

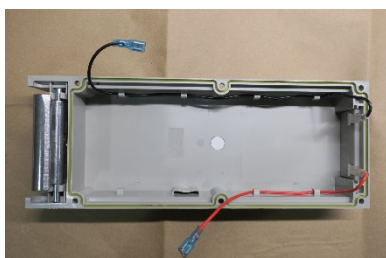
*Paddings*



*PTC with RED and BLACK wires*



*Casing with RED and BLACK wires.*



*2 x Battery*



## INSTRUCTIONS

### WARNING:

*When handling a battery, make sure that a battery's metal contacts are not touching any objects. Doing so will create spark and may cause fire.*

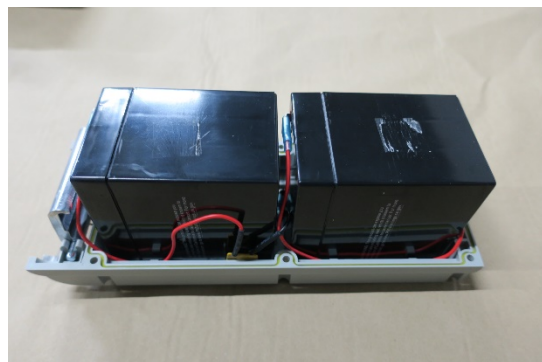
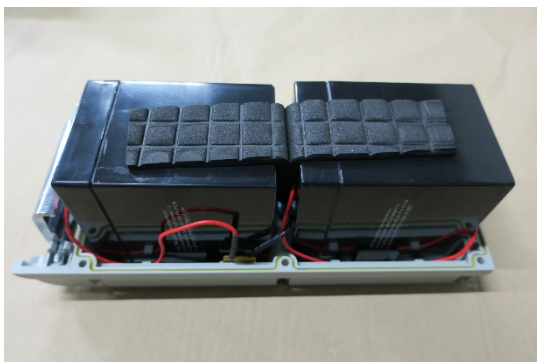
1. Remove the 6 Phillips head screws.



2. Turn the battery pack upside down and remove the battery pack cover.



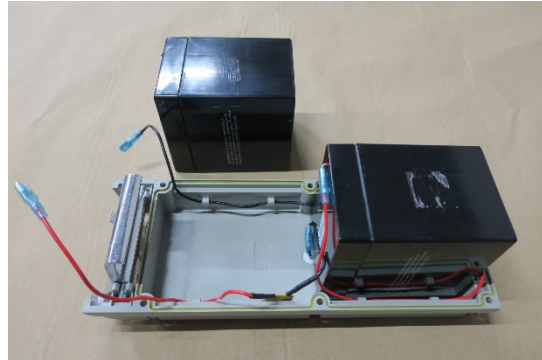
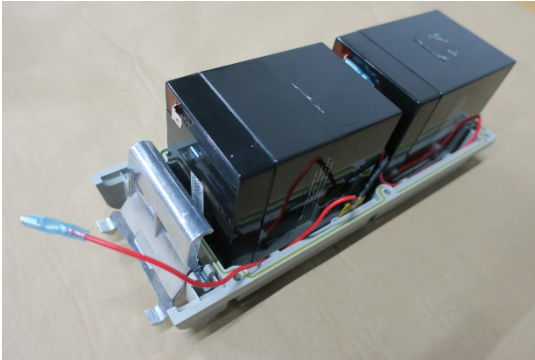
3. Remove the paddings.



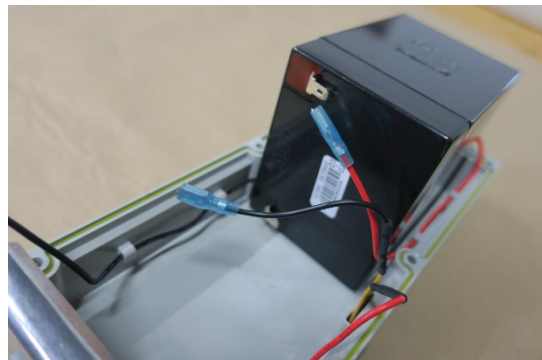
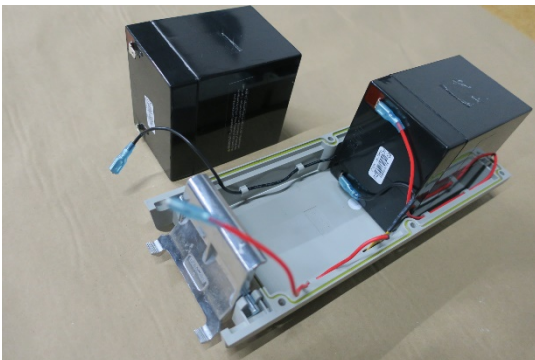
4. *Disconnect the RED wire from the first battery. Place the battery outside the casing and disconnect the BLACK wire.*

**WARNING:**

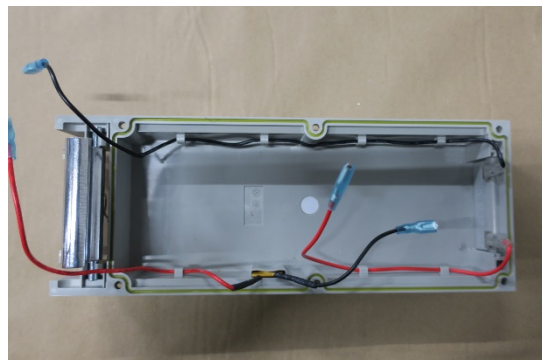
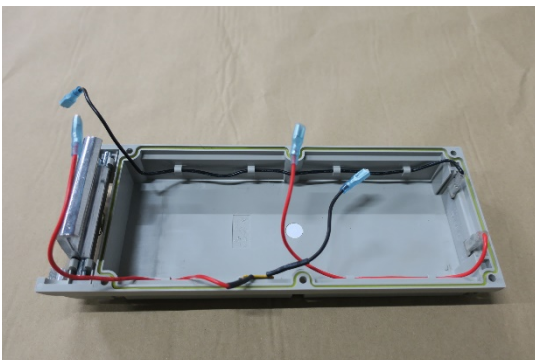
*Make sure there are no objects touching the battery's metal contacts.*



5. *Disconnect both RED and BLACK wires from the second battery. Set the old batteries aside for recycling.*



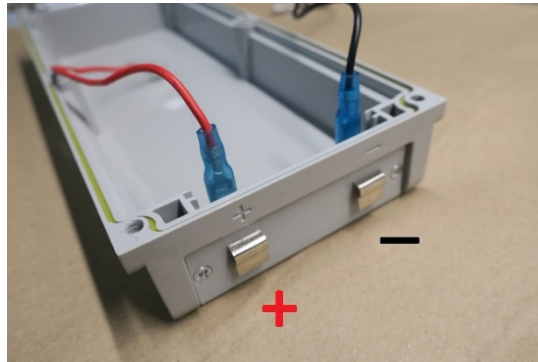
6. *Examine the wires. Check to make sure the wires are secured under the clips along casing's walls.*



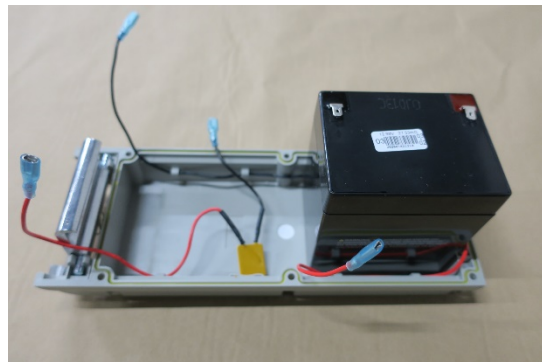
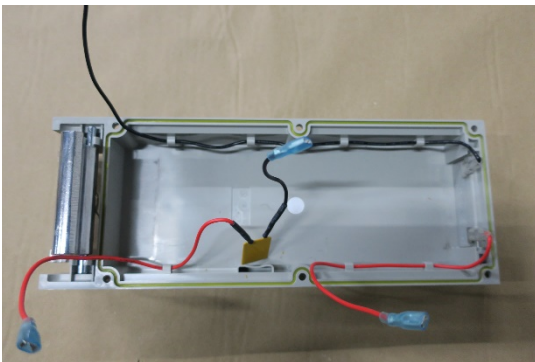
7. If the casing's wires detached from the casing's terminals during the process. Ensure that the RED wire is connected to the (+) terminal, and the BLACK wire is connected to the – terminal.

**WARNING:**

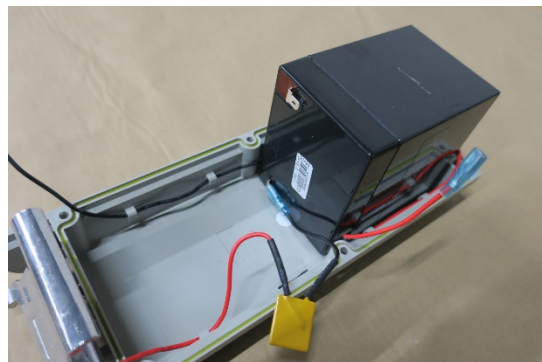
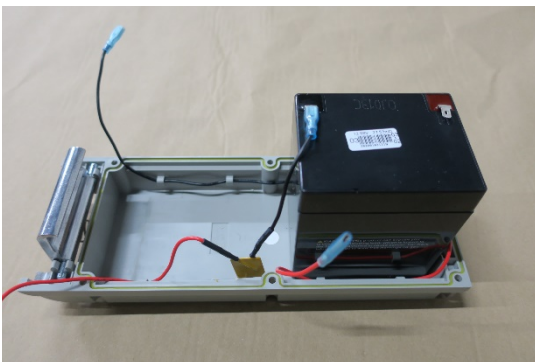
*Incorrectly connected wires will damage the control box.*



8. Remove the PTC from its pocket temporarily. Place the first new battery inside the casing.

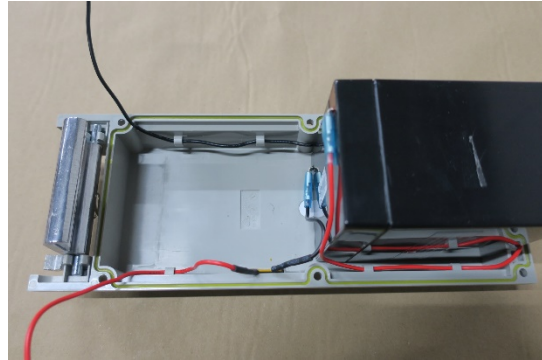
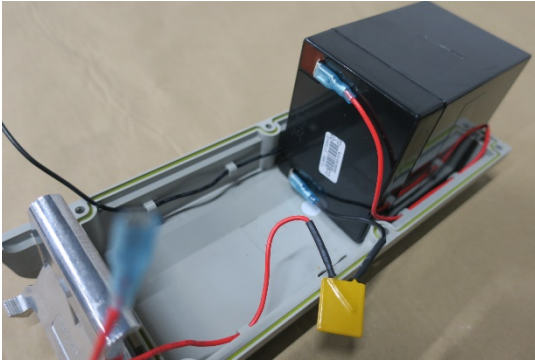


9. Connect the PTC's BLACK wire to the battery's BLACK terminal. Turn the battery on its side as shown in the picture.

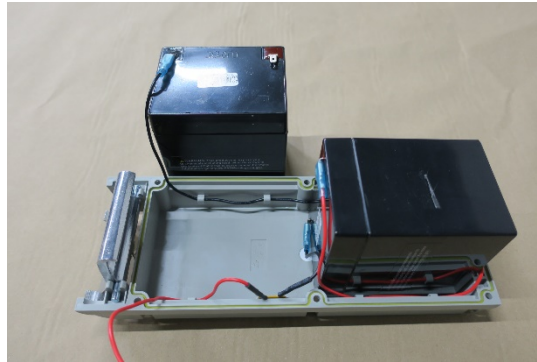




10. Connect the casing's RED wire to the battery's RED terminal.  
Reinsert the PTC back into the pocket.



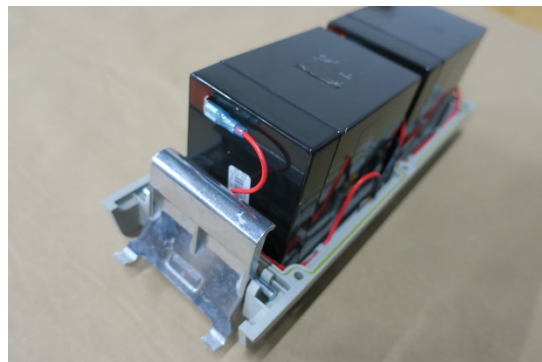
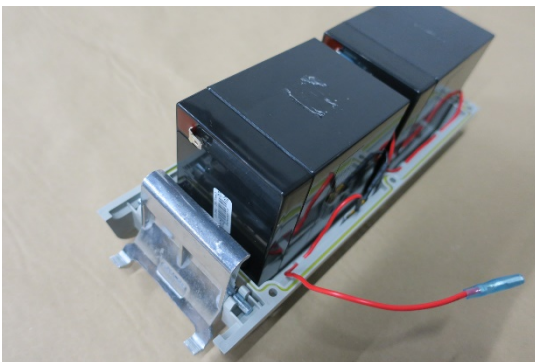
11. Place the second battery and connect the casing's BLACK wire to the battery's BLACK terminal.



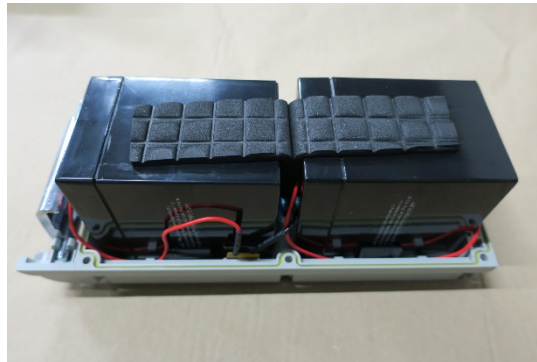
12. Place the second battery inside the casing and turn it on its side as shown in the picture.  
Connect the PTC's RED wire to the battery's RED terminal.

**WARNING:**

Place the second battery so that the terminals are facing away from the first battery. If the terminals of both batteries are in contact, it will cause fire.



13. Insert the paddings.



14. Place the battery pack cover.

**WARNING:**

*Ensure that all wires and paddings are not caught between the casing and the cover.  
Damaged wires will cause fire.*



15. Turn the battery pack over and reinsert the screws.  
*Tighten the screws in the order shown in the picture.*

